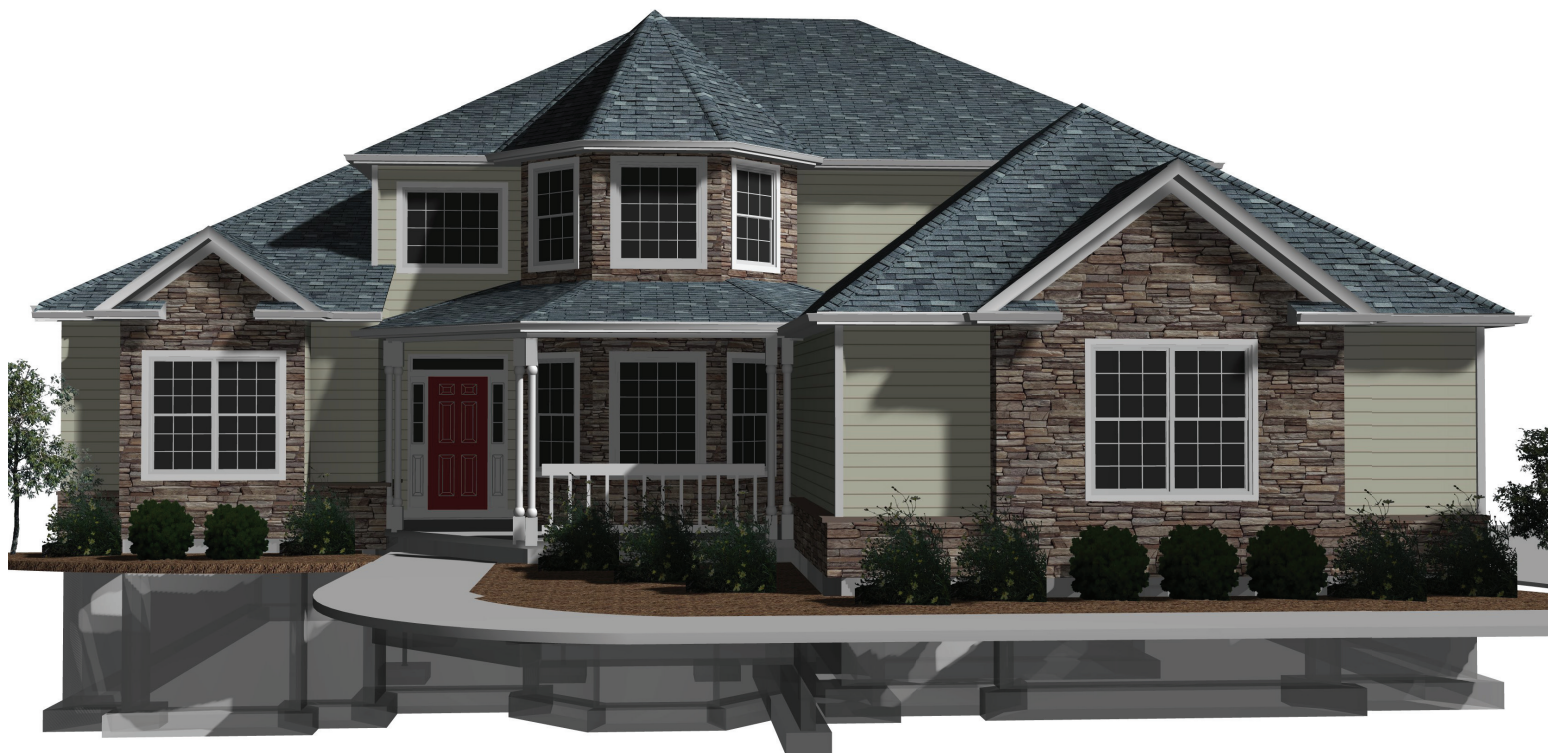




The **VICTORIA**

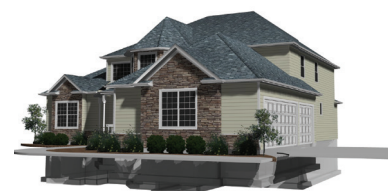
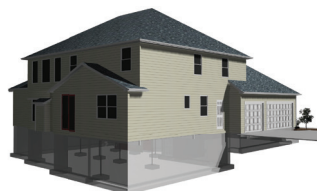
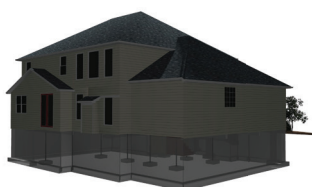
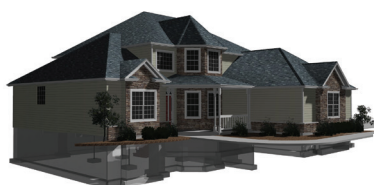
1.5 Story | 3207 SqFt | 4 Beds | 2.5 Baths



True custom. From design to finish.

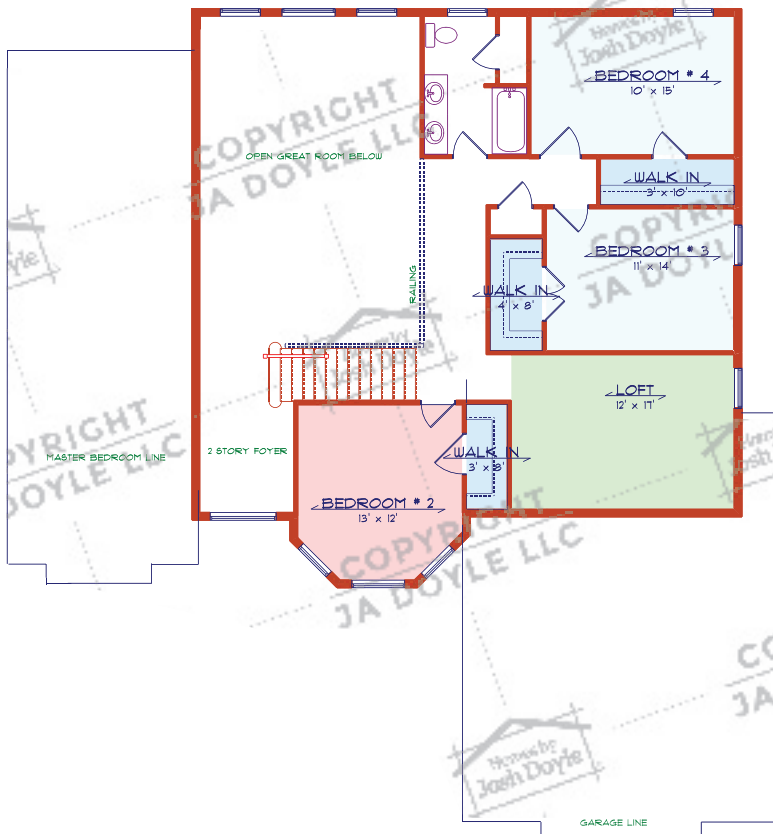
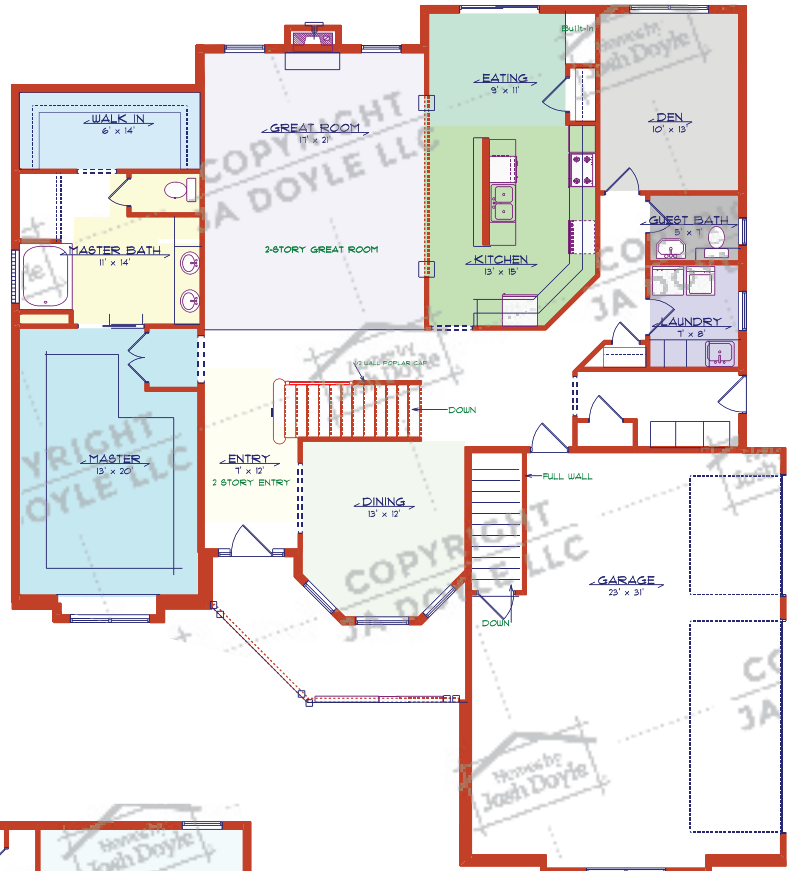
It all starts with the design, and at Homes by Josh Doyle, you can choose and modify one of our many plans, or start fresh with your own ideas. Let Josh design your custom dream home for **FREE**. All of our homes are built for each customer based on their specific wants, needs and budget.

Schedule your **FREE design and estimate today!**



1ST FLOOR

Our homes are designed with an open concept. We do this to share living space and experience with your family, make your home feel larger, and to allow natural light throughout.



2ND FLOOR

BASEMENT

Our basements are designed for maximum openness, keeping all utilities like ductwork, pipes, wires, beams and poles out of your future finished spaces ultimately saving you time and money.